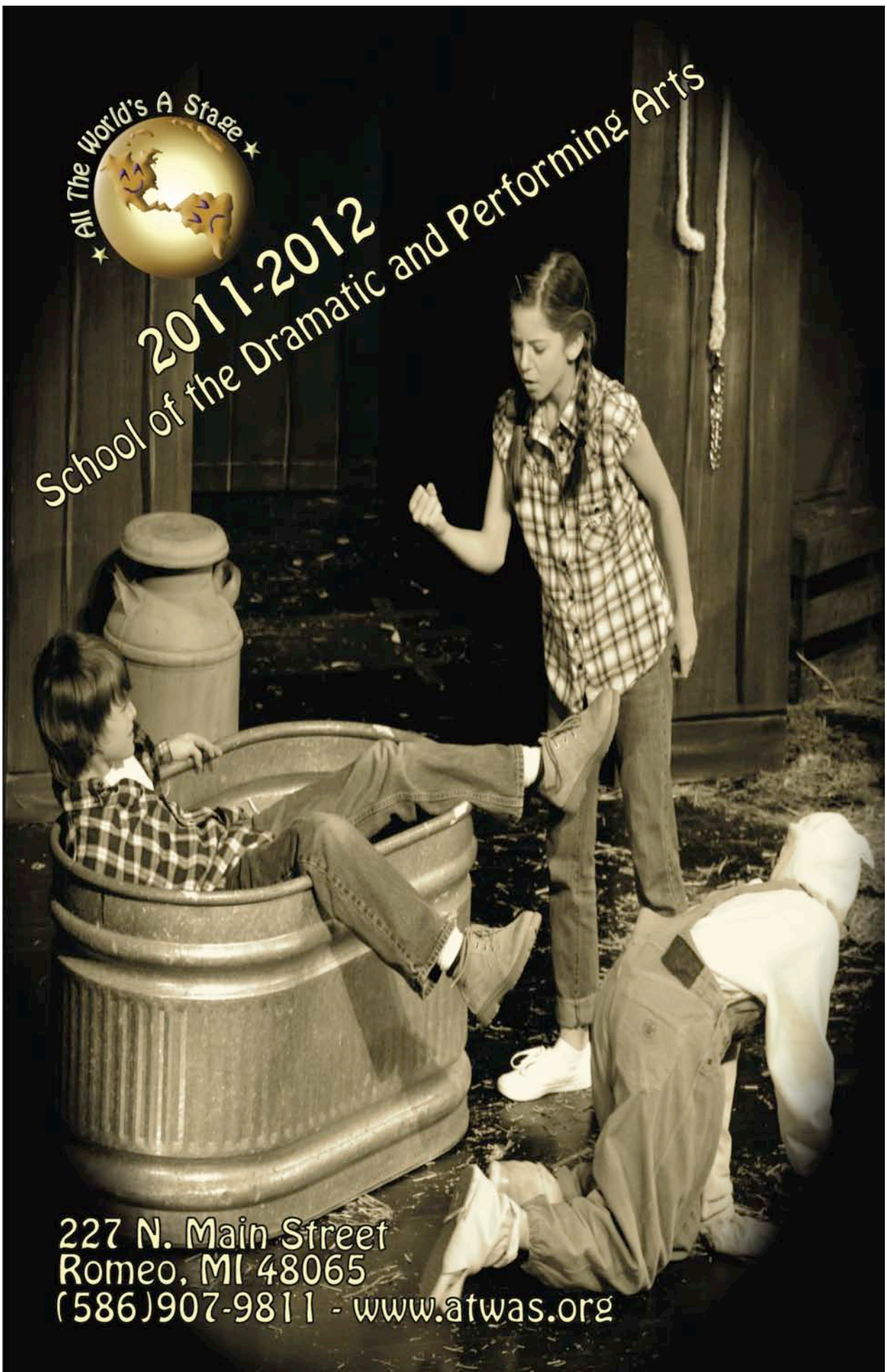




2011-2012  
School of the Dramatic and Performing Arts



227 N. Main Street  
Romeo, MI 48065  
(586)907-9811 - [www.atwas.org](http://www.atwas.org)



# A Chance for Kids To Grow

## Welcome to the ATWAS School of Dramatic and Performing Arts

Established in 1986 we have provided people of all ages and abilities with unique and professional caliber theatre training and performance opportunities. Through our comprehensive training and performance programs we offer an exciting blend of theatre experiences for the entire family.

Our programs are developed in the philosophy that skills intrinsic to theatre as an art form contribute to an individual's growth and development. Consequently, our professional staff and adjunct theatre artists not only train our students to be better actors, but inspire them to be better and more productive people. We invite you to join our theatre family and experience the joys of discovery and self-expression through the performing arts.



### What they say about ATWAS

*"...the growth I've seen in my daughter (and the friends she's made at ATWAS) is phenomenal. That you treat them with respect and kindness while giving them such solid direction and guidance is the reason these kids keep coming back year after year. You guys have a wonderful, unique organization that is clearly impacting countless lives." - Donna Hodgson*

*"My daughter is a "unique" individual. In ATWAS, she has found not only the ability to do productions and take classes, but to be a part of a "FAMILY" of so many kids just like herself. She understands them and they understand her and already she has made some terrific friends! This is EXACTLY what we needed! THANK YOU, THANK YOU, THANK YOU...What you do for our children is such a BLESSING." -Susan Burtka*

*"How does an engineer get to do this? Your gift to me is one that I don't think I'll ever know the full value, but my appreciation for it grows every day."  
- Patrick MacDonald - former student*



# ★ Registration Information & Policies ★

## Registration Information

Please use the registration form in this booklet to register for our classes. Additional forms may be downloaded from our website: [www.atwas.org](http://www.atwas.org). Forms are processed in the order they are received. You will receive a class confirmation 1-2 weeks prior to the start of class. Please fill out one registration form per child. Mail your completed registration form with fees to: ATWAS - 40027 Aynesley - Clinton Township, MI 48038

Return student classes are only open to students that have previously taken ATWAS fall/winter workshop classes. Even if there has been experience on stage or in drama classes elsewhere, you may not register in a return student class without having previously been a fall/winter semester student. Any summer workshop students must also register for our new student classes.

## Class Fees and Payment

Class fees must accompany the registration form.

There is a cancellation fee of \$30.00. Refunds will be given (minus the cancellation fee of \$30.00) before the first day of class.

There is a Non Sufficient Funds Check Fee of \$30.00

**1st & 2nd grade and Adult Classes** must be paid in full at time of registration. Once class begins there is a no refund policy.

### **3rd- 12th grade year long program:**

For year long classes there are two payment options, "Pay in full" or "monthly payment".

*Pay in full option* - If you pay in full for the year at the time of registration, you will get a discount of one month's free tuition. Refund Policy for "Paid in full": If you paid in full for the year at time of registration, there will be a 50% refund given through the month of September. No refunds will be issued after September 30th.

*Monthly Payment Option* - One month's tuition is due at the time of registration. Once class begins there is a no refund policy. Monthly payment is due by the first class of each month. If monthly tuition is not received on the first class your child may not be able to participate until payment is received.

## Class Sizes & Course Cancellations

ATWAS reserves the right to cancel or rearrange any class in accordance with enrollment. In the event of a course cancellation, any tuition paid will be refunded in full.

## Attendance Policy

We expect students to attend class regularly and on time. Since much of the class work is focused on building an ensemble, it is imperative that all team members be present. In the event of an emergency or sickness affecting attendance, please call 907-9811 to notify the instructor.

## Inclement Weather Policy

In the event of inclement weather, please call (586)907-9811 or check our website to find out if class has been canceled. Since our classes are usually in the afternoon, schools may have to cancel while we do not. In the event classes are canceled, we will do everything in our power to reschedule, however, we cannot guarantee a make-up session.



# Theatre Arts Core Classes - Grades 3-12

## New Students



The ATWAS year long dramatic arts program is designed for students to study a comprehensive theatre arts curriculum including acting for the stage, acting for the camera, improvisation, musical theatre (vocal music & choreography), technical theatre, and stage make-up. All students in these classes have the opportunity to be in at least one show with ATWAS during the 2011-2012 season for NO ADDITIONAL FEE. Please check for specific performance opportunities listed below the class description.

### Advanced Acting FUNdamentals: Grades 3-5

**PREREQUISITE:** *Must be a returning fall/winter ATWAS student*

**CLASS SIZE:** *Min. 8 - Max. 20*

Our "Advanced Acting FUNdamentals" class provides returning ATWAS students the opportunity to continue their development in theatrical performance. This course is designed to help our return students hone their physical and vocal acting skills.

**PERFORMANCE OPPORTUNITIES** - This class culminates with a show in May at Gray's Opera House in Romeo. Students in this class may audition for our 2011-2012 family series by invitation only.

**TUESDAYS, 5:00-7:00pm**

**September 13, 2011 - May 15, 2012**  
(No classes - Nov 22, Dec 27, Jan 1 & Apr 3)

**OR**

**SATURDAYS, 3:00-5:00pm**

**September 10, 2011 - May 12, 2012**  
(No classes - Nov 26, Dec 24, Dec 31 & Apr 7)

### Master Class: Grades 11-12

**PREREQUISITE:** *None*    **CLASS SIZE:** *Min. 5 - Max 20*

"Master Class" provides ATWAS students the opportunity to continue their development in theatrical performance at an advanced level. This course is designed at a collegiate level to help prepare our students to explore a career in theatre arts. Students will hone their acting skills along with advancing their study each year in a specific theatrical area such as directing, Shakespeare, Classical theatre, scenes and more.

**PERFORMANCE OPPORTUNITIES** - Students in "Master Class" are encouraged to audition for our family series shows. The performance opportunities for the 2011-2012 season are on the next page.

**SATURDAYS, 9:00-10:30am**

**September 10, 2011 - May 12, 2012**  
(No classes - Nov 26, Dec 24, Dec 31 & Apr 7)

### Performance Skills: Grades 7-10

**PREREQUISITE:** *None*    **CLASS SIZE:** *Min. 8 - Max. 20*

"Performance Skills" provides students the opportunity to learn all aspects of theatrical performance. Students are introduced to the world of acting through character development, script analysis, monologues and more.

**PERFORMANCE OPPORTUNITIES** - Students in "Performance Skills" are encouraged to audition for our family series shows. The performance opportunities for the 2011-2012 season are on the next page.

**MONDAYS, 7:00-8:30pm**

**September 12, 2011 - May 14, 2012**

(No class - Oct 31 - make-up class Wed. Nov 2)

(No classes - Nov 21, Dec 26, Jan 2 & Apr 2)

### Class Tuition

**"Monthly Payment" - \$55.00 per month**  
(September - May)

**OR**

**"Pay in full" - \$440.00 per year**  
**DISCOUNT- save one month's tuition!**

**Family Discount** - (core classes only) Enroll any siblings and receive \$5.00 off each additional registration per month.

### Class Requirements

**Additional requirements:** Students must provide their own:

- theatrical make-up kit (available for purchase through ATWAS)
- basic costume/rehearsal attire which consists of:
  - \* plain long sleeve black shirt
  - \* black pants
  - \* black shoes

All other costumes/ sets/props etc. will be provided by ATWAS for no additional fee.



# Theatre Arts Core Classes - Grades 3-12



## Return Students

The ATWAS year long dramatic arts program is designed for students to study a comprehensive theatre arts curriculum including acting for the stage, acting for the camera, improvisation, musical theatre (vocal music & choreography), technical theatre, and stage make-up. All students in these classes have the opportunity to be in at least one show with ATWAS during the 2011-2012 season for NO ADDITIONAL FEE. Please check for specific performance opportunities listed below the class description.

### Theatre FUNDamentals: Grades 3-6

PREREQUISITE: None CLASS SIZE: Min. 8 - Max. 20

“Theatre FUNDamentals” provides students the opportunity to learn all aspects of theatrical performance. Students are introduced to the world of acting through character development, improvisation & script analysis.

PERFORMANCE OPPORTUNITY - This class culminates with a show in May at Gray’s Opera House in Romeo.

**MONDAYS, 5:00-7:00pm**

**September 12, 2011 - May 14, 2012**

(No class - Oct 31 - make-up class Wed. Nov 2)

(No classes - Nov 21, Dec 26, Jan 2 & Apr 2)

### Center Stage: Grades 6-8

PREREQUISITE: Must be a returning fall/winter ATWAS student

CLASS SIZE: Min. 8 - Max. 20

Our “Center Stage” class is for returning ATWAS students to give them the opportunity to continue their development in theatrical performance at an intermediate level. This course is designed to help our return students hone their acting skills along with introducing them to new areas of theatrical study each year such as directing, Shakespeare, scene work and more.

PERFORMANCE OPPORTUNITIES - Students in “Center Stage” are encouraged to audition for our family series shows. The performance opportunities for the 2011-2012 season are on the next page.

**TUESDAYS, 7:00-8:30pm**

**September 13, 2011 - May 15, 2012**

(No classes - Nov 22, Dec 27, Jan 1 & Apr 3)

**OR**

**SATURDAYS, 1:30-3:00pm**

**September 10, 2011 - May 12, 2012**

(No classes - Nov 26, Dec 24, Dec 31 & Apr 7)

### Master Class: Grades 9-12

PREREQUISITE: Must be a returning fall/winter ATWAS student  
OR a new 11th-12th grade student.

CLASS SIZE: Min. 5 - Max 20

“Master Class” provides ATWAS students the opportunity to continue their development in theatrical performance at an advanced level. This course is designed at a collegiate level to help prepare our students to explore a career in theatre arts. Students will hone their acting skills along with advancing their study each year in a specific theatrical area such as directing, Shakespeare, Classical theatre, scenes and more.

PERFORMANCE OPPORTUNITIES - Students in “Master Class” are encouraged to audition for our family series shows. The performance opportunities for the 2011-2012 season are on the next page.

**SATURDAYS, 9:00-10:30am**

**September 10, 2011 - May 12, 2012**

(No classes - Nov 26, Dec 24, Dec 31 & Apr 7)

### Class Tuition

**“Monthly Payment” - \$55.00 per month  
(September - May)**

**OR**

**“Pay in full” - \$440.00 per year  
DISCOUNT- save one month’s tuition!**

Family Discount - (core classes only) Enroll any siblings and receive \$5.00 off each additional registration per month.

### Class Requirements

Additional requirements: Students must provide their own:

- theatrical make-up kit (available for purchase through ATWAS)
- basic costume/rehearsal attire which consists of:
  - \* plain long sleeve black shirt
  - \* black pants
  - \* black shoes

All other costumes/ sets/props etc. will be provided by ATWAS for no additional fee.

## Additional Theatre Arts Enrichment

### ★ Creative Drama: Grades 1 & 2 ★

PREREQUISITE: None  
CLASS SIZE: Min. 8 - Max 15

Our young actors will hone their theatrical skills such as concentration, cooperation, movement, pantomime, voice and character while learning to bring stories to life. On the last day of class, parents are invited to join us for an informal presentation based on the materials learned by students throughout the class.



#### **Session I: Animal Kingdom**

THURSDAYS, 5:30-6:30pm  
October 6 - November 17, 2011

**TUITION - \$65.00**

#### **Session II: Royal Enchantment: Kings, Queens, Knights and Dragons**

THURSDAYS, 5:30-6:30pm  
March 1 - April 19, 2012 (no class April 5)

**TUITION - \$65.00**



### ★ The Actor's Studio: Ages 18 and up ★

PREREQUISITE: None CLASS SIZE: Min. 5 - Max 20

Actors will build their theatrical repertoire by exploring voice, body and character through improvisation and script analysis.

#### **Session I: Stage & Performance Fundamentals**

THURSDAYS, 7:00 - 8:30pm  
October 6 - November 17, 2011

**TUITION - \$95.00**

#### **Session II: Acting for the Camera**

THURSDAYS, 7:00 - 8:30pm  
March 1 - April 19, 2012 (no class April 5)

**TUITION - \$95.00**



Our Family Series is a popular theatre series for youth and families around the area. All returning 6th grade students and all new and returning 7th-12th grade students who are enrolled in our core classes are invited to audition for our shows. Presenting several shows each season, this series provides our students the opportunity to apply learned theatre skills in a professional setting. This popular and successful Family Theatre Series reaches audiences of between 7,000 - 8,000 patrons annually.

**THE  
PHANTOM  
TOLLBOOTH**  
DECEMBER 2011  
STEVENSON HIGH SCHOOL-UCS

**The Velveteen Rabbit**



JANUARY 2012  
GRAY'S OPERA HOUSE



FEBRUARY/MARCH 2012  
GRAY'S OPERA HOUSE



MAY 2012  
GRAY'S OPERA HOUSE



APRIL 2012  
MACOMB CENTER FOR  
THE PERFORMING ARTS

*"ATWAS has ruined me for regular high school plays! I have attended several and am repeatedly struck by how much better put together and acted the ATWAS performances are." - Jennifer Case*

*"We have never seen such a professional, detailed and enjoyable young people's performance. Each member of the cast seemed to be the perfect choice for his or her part, and each one was played so well. We wanted you to know what a special evening it was for our family and we look forward to your next performance! Thanks so much and congratulations on your well deserved applause!!!" - unknown patron*



# All The World's A Stage Staff



**Lou Fazzini - Executive/Programs Director**



Lou is the founder of ATWAS and has an M.A. in Theatre Arts with a specialization in Drama/Theatre for the Young from Eastern Michigan University. He is also a former adjunct theatre instructor at Macomb Community College (MCC).

**Lisa Dobbin - Artistic Director**



Lisa received her B.A. in Theatre Performance, B.A. in Psychology, and M.A. in Psychology with a specialization in Organizational Behavior Management from Western Michigan University. She has been an integral part of the development and success of our ATWAS arts education programming.

**Mary Kay Hake - Associate Director**



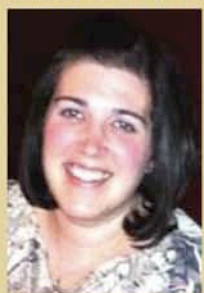
Mary received her B.A. in theatre from Western Michigan University and her M. A. in Theatre Arts from Wayne State University. She joined our staff in August 2008 after serving four years as head of the Theatre Department at the Arts Academy in The Woods and is also a former adjunct theatre instructor at MCC.

**Tina Gloss-Finnell - Film / Theatre**



Tina is a professional Actor in Theatre, Film, Commercial and Television for over 15 years. She earned a BFA in Acting from West Virginia University. She spent the last 12 years in Los Angeles where she may be recognized as Ned's Mother on the Emmy Award winning ABC series Pushing Daisies.

**Lindsay Martin - Vocal Music**



Lindsey will be going into her 10th year of teaching vocal music. She is the Director of Vocal Music at Holly High School. She received a Bachelor of Arts and a Bachelor of Music Education degree and received her Master of Music Education degree from Oakland University.

**Allyson Ortwein - Choreography**



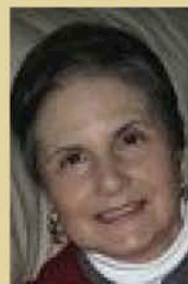
Allyson received her BFA in Musical Theatre, and BA in Dance from Oakland University in 2009. She continues to act professionally and provides contracted choreography services throughout the Detroit Metropolitan area.

**Jerome Hoppe - Technical Theatre**



Jerome received his B.A. in Technical Theatre from Western Michigan University, and his M.A. in Lighting Design from Rutgers University. He is currently a free lance lighting designer and employed full time with the Utica Community Schools as their Performing Arts Center Manager.

**Merle Fazzini - Creative Drama Specialist**



Merle is a retired certified teacher. She received her B.A. in Education from Northeastern Illinois University, and a M.A. in Education from Saginaw Valley State University. She has a strong theatre arts background and is a past member of the American Alliance for Theatre In Education.

**Christina Killmar - Technical Theatre**



Christina received her B.A. in Scenic Design from Western Michigan University. She is currently employed as the technical theatre director for the Macomb Center for the Performing Arts.

**Dawn Janicki - Make-up**



Dawn is a former ATWAS student, and received her BFA in Theatre Performance from Wayne State University. She has worked in various professional capacities with ATWAS and specializes in theatrical make-up for the stage.

# ATWAS Registration Form

Student Name: \_\_\_\_\_

M  F

Address: \_\_\_\_\_

City: \_\_\_\_\_ State \_\_\_\_\_ Zip \_\_\_\_\_

Email Address: \_\_\_\_\_

Phone Number: \_\_\_\_\_ Grade in School (Fall 2011) \_\_\_\_\_

## **Core Classes**

Theatre FUNdamentals: Grades 3-6

Adv. Acting FUNdamentals: Grades 3-5

Tuesdays 5-7 pm

Saturdays 3-5 pm

Center Stage: Grades 6-8

Tuesdays 7-8:30 pm

Saturdays 1:30-3 pm

Performance Skills: Grades 7-10

Master Class: Grades 9-12

### **Payment**

Payment Plan - \$55.00 per month

Pay in Full (with discount) - \$440.00

A \$55.00 down payment with registration will hold your spot (cancellation fee applies). The "pay in full" balance is due before the first day of class to receive the discount.

Family Discount (Core Classes Only)

Please fill out one registration form per child. If you have more than one child enrolling in classes, please attach registration forms. The first child is full price, each additional child receives \$5.00 per month / \$45.00 off per year. Both children must be enrolled in Core Classes.

**Amount Enclosed \$** \_\_\_\_\_

## **Additional Enrichment Classes**

You may sign up for both semesters at time of registration, please check all that apply.

Creative Drama: Grades 1&2  
Session 1: Animal Kingdom

**\$65.00**

Creative Drama: Grades 1&2  
Session 2: Royal Enchantment

**\$65.00**

The Actor's Studio: Adults 18 & up  
Session 1: Stage & Performance

**\$95.00**

The Actor's Studio: Adults 18 & up  
Session 2: Acting for the Camera

**\$95.00**

**Amount Enclosed \$** \_\_\_\_\_

To register, please send completed form and payment (checks made payable to):

**ATWAS  
40027 Aynesley  
Clinton Township, MI 48038**

**PHOTO RELEASE:** I hereby give All The World's A Stage the right to use my name or photograph in all forms of media. I also waive any right to inspect or approve the finished product.

Signature: \_\_\_\_\_ Date: \_\_\_\_\_